

Plymouth Ocean Science Voyage eDNA



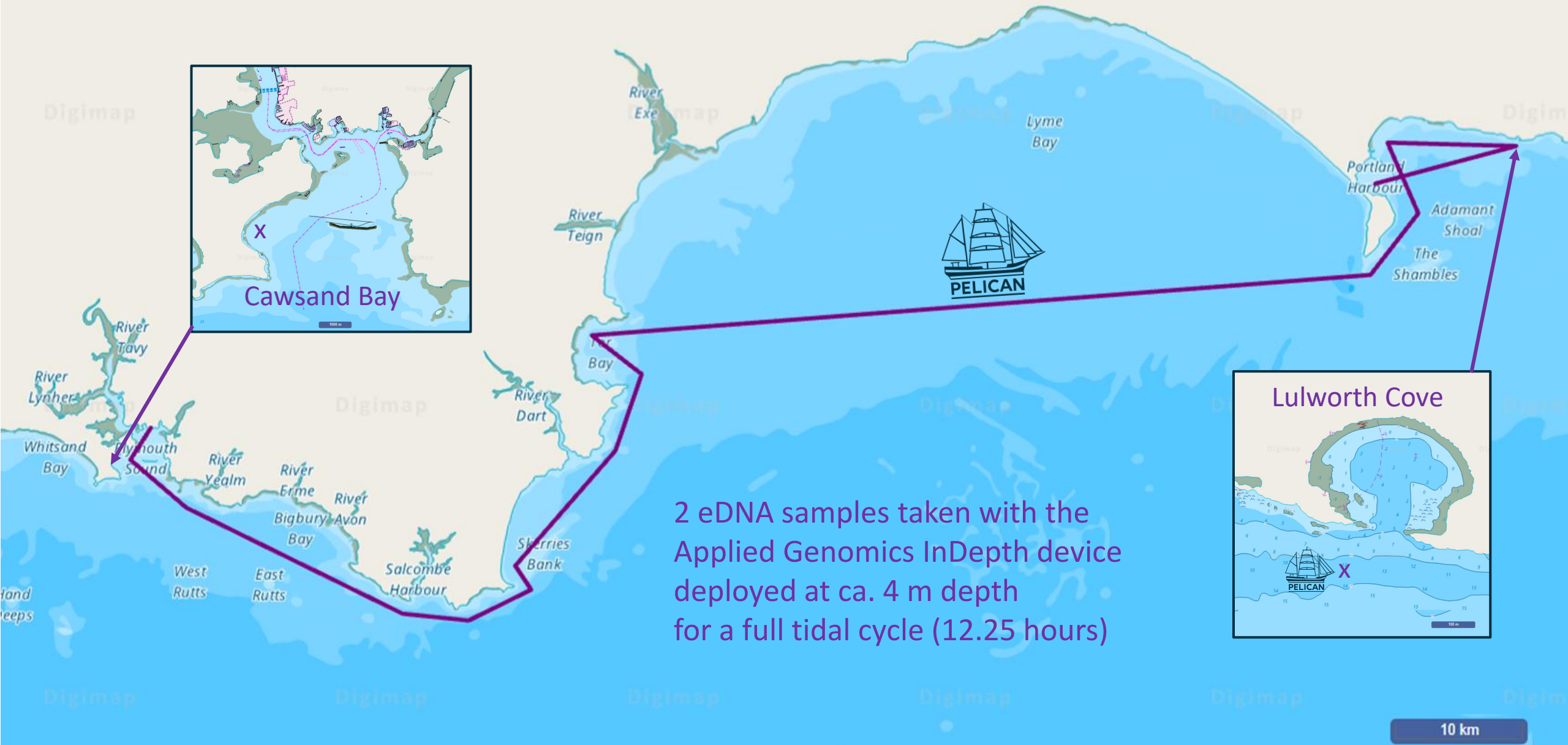
Charlotte Braungardt PhD

Head of Science Seas Your Future

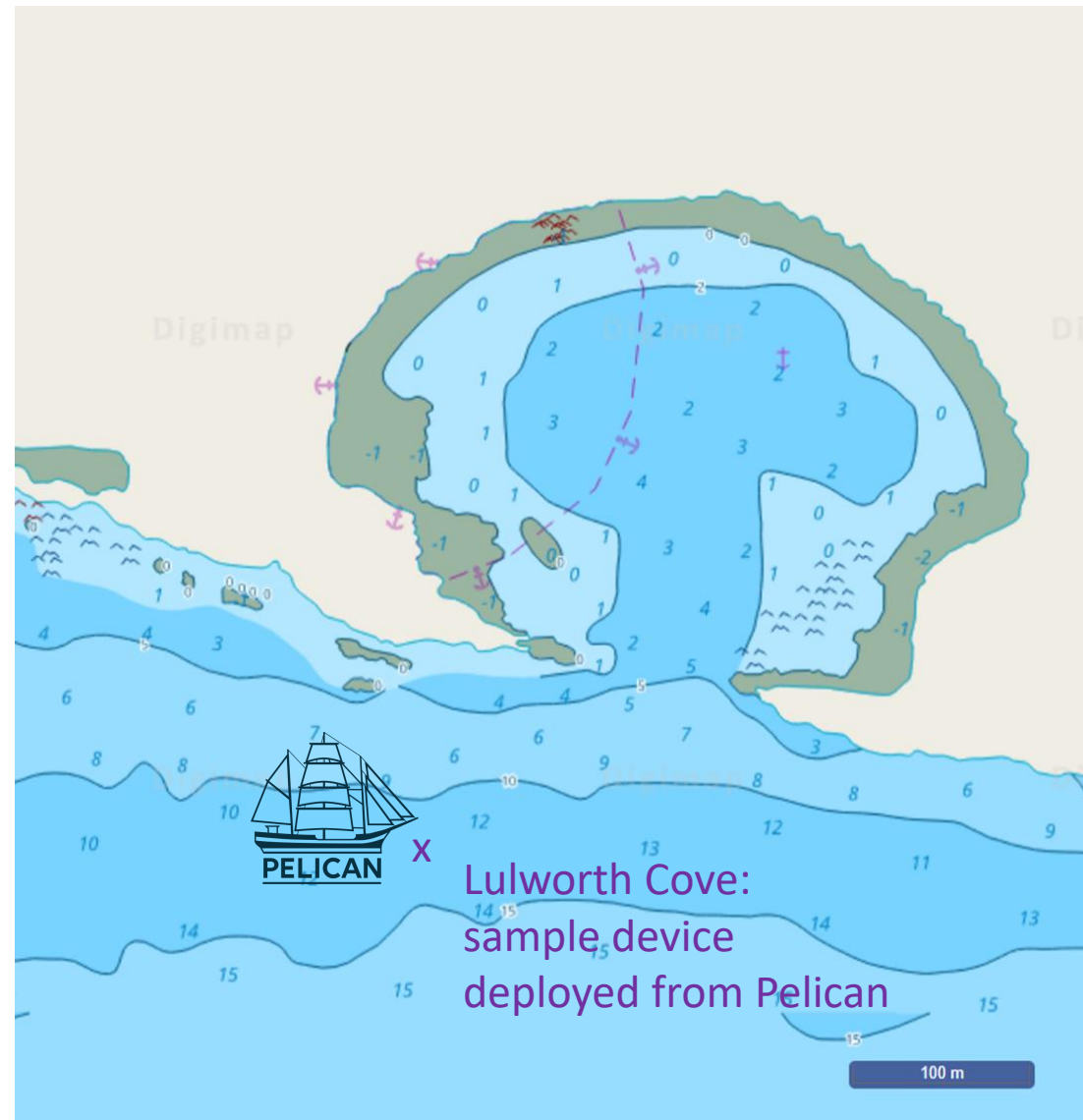
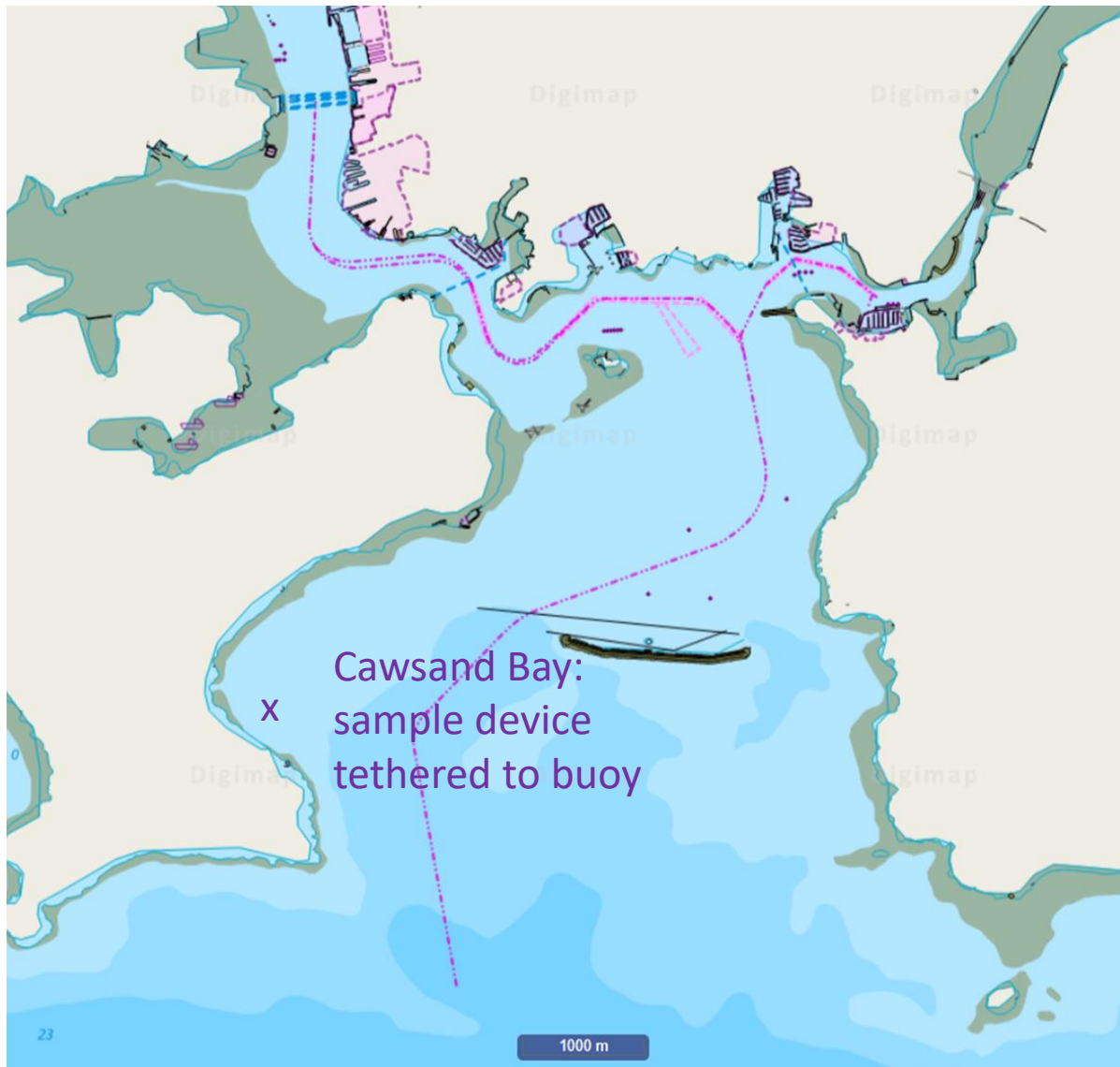
charly@pelicanoflondon.org

<https://www.pelicanoflondon.org/>

Plymouth Ocean Science Voyage 2025



eDNA samples September 2025

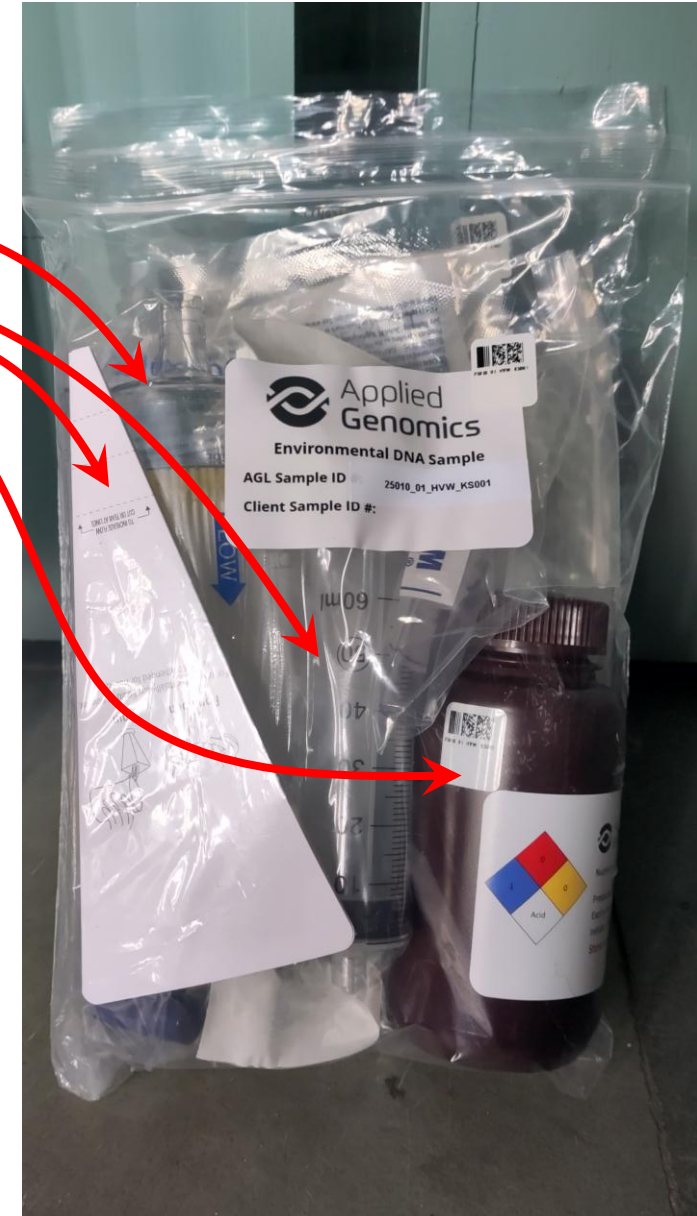


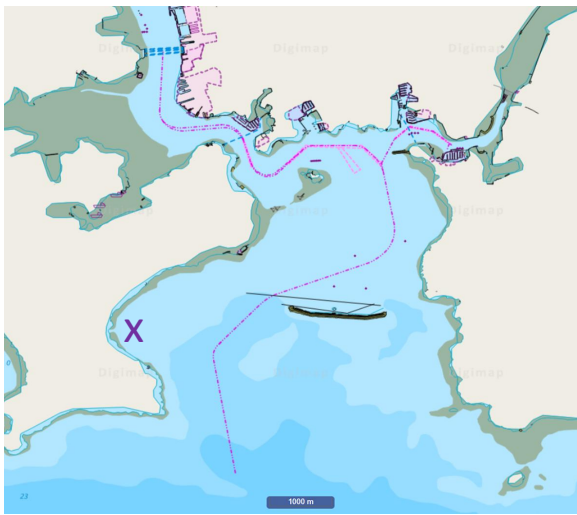
inDepth eDNA sampler by Applied Genomics

InDepth sampler, pre-programmed to sample for 12.25 h

Sample kit, including filter cartridge,
syringe,
DNA preservative and funnel
and instructions

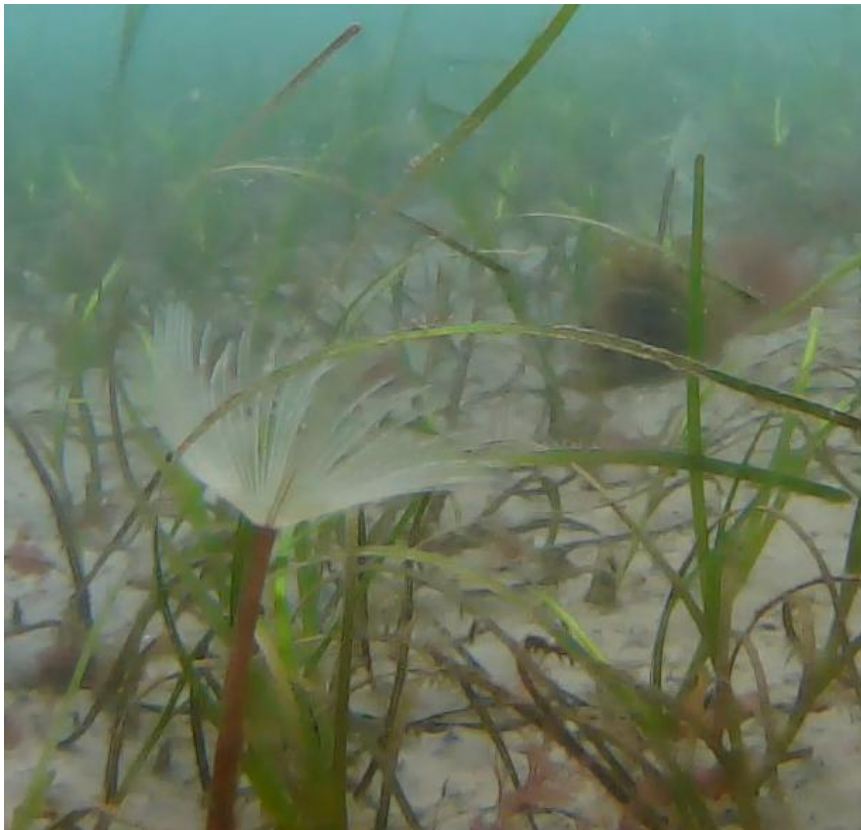
Harness, for deployment





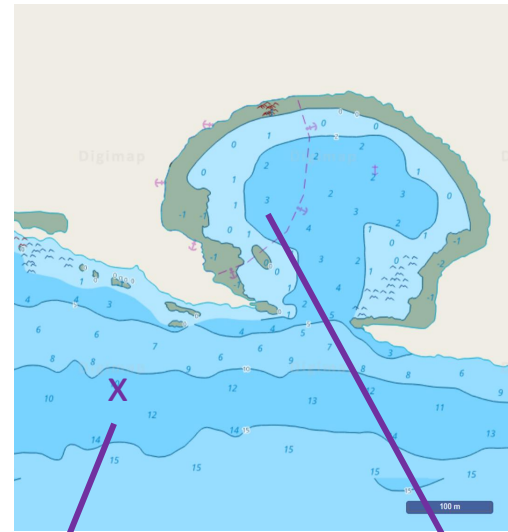
Cawsand Bay – Shelly's view

Recovering seagrass meadow on sandy substrate
with some algal and invertebrate diversity.
Only very few and small fish spotted with ROV



Off Lullworth Cove

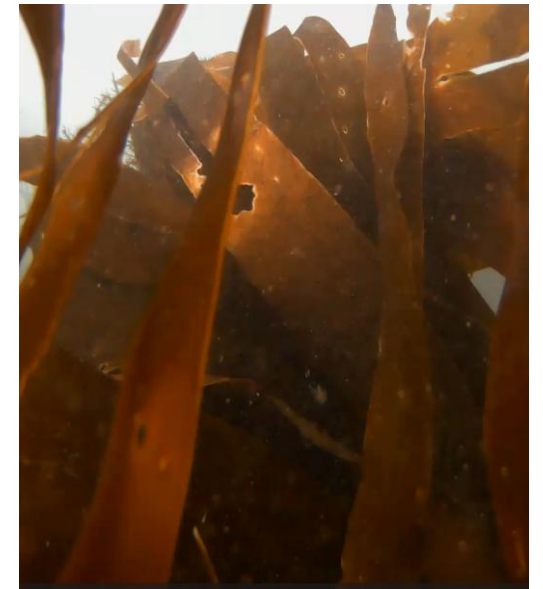
Barren, sandy substrate characterised by wave-formed ripples and little life (~12 m depth)



eDNA

In Lullworth Cove

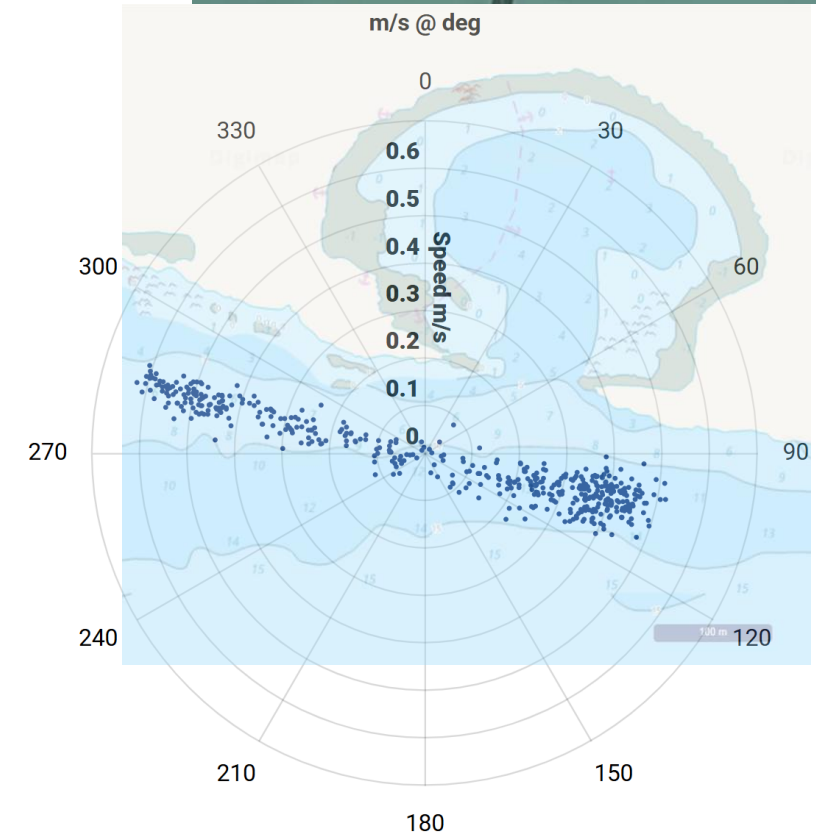
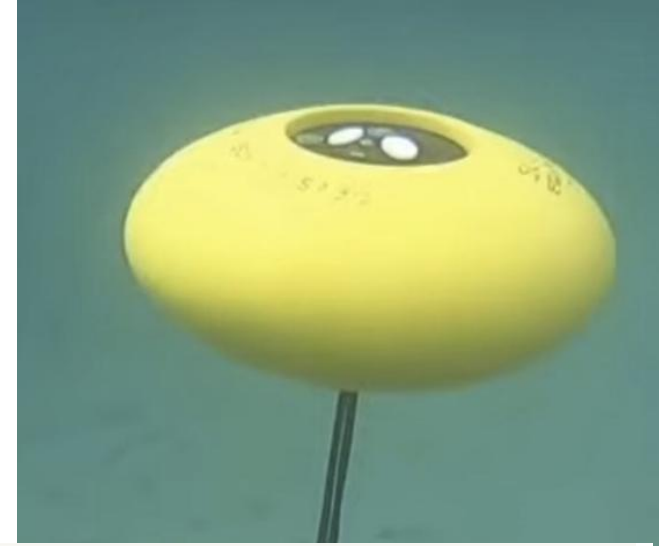
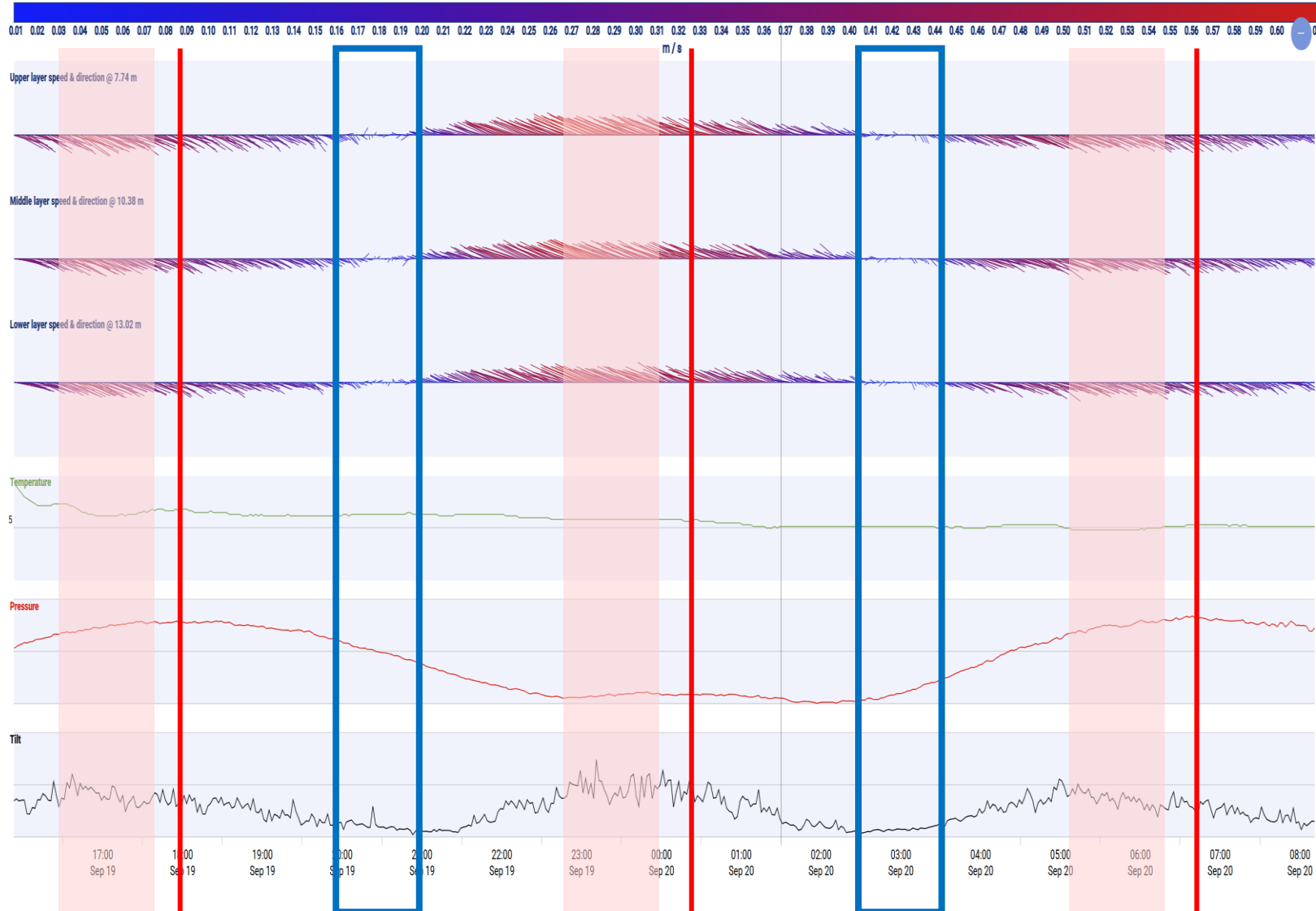
Substrate is coarse sand and boulders, characterised by dense, diverse seaweeds and some fish (1-2.5 m depth)



Off Lulworth Cove – Bob's view

Asymmetric, unusual and turbulent tide that follows shoreline:

highest velocity ahead of slack water & turn of tide during falling or rising limb





eDNA results are available

<https://challenginghabitat.com/projects/#eDNA>



a wrasse, probably a rock cook (*Centrolabrus exoletus*) in a kelp forest off Plymouth Sound